



সেন্টার ফর পলিসি ডায়ালগ (সিপিডি)  
Centre for Policy Dialogue (CPD)

First  
Industrial  
Safety  
Forum  ISF

12 May 2022

## ► **First technical session**

# Role of public institutions in developing Industrial Safety Framework

George Faller, Chief Technical Adviser, RMG programme, ILO, Bangladesh

## ▶ OSH requires multi-stakeholder approach

### Objective

Industrial Safety Framework to coordinate the efforts of all relevant entities for the development of a safe working environment for all working in industry. Multiple interventions include

- ▶ National occupational safety and health policies
- ▶ Enforcement of building codes for safe buildings
- ▶ Compliance with Bangladesh Labour Act
- ▶ Safe and healthy work practices
- ▶ Risk assessments and awareness raising exercises
- ▶ Training, research and guidance materials



Act together to build a positive safe and healthy culture.

## ▶ Before occupation of industrial premises

### Start with safe buildings

Cannot ensure safety at work if the infrastructure housing the workplace is not safe. Public institutions play a pivotal role here

- ▶ BNBC sets out safety measures for structures, fire, etc
- ▶ Need to be integrated before the building becomes a workplace
  - Control of structural safety before building occupation
  - Fire safety measures to ensure safe evacuation built in before occupation
- ▶ Safe installation of systems also before occupation
  - Emergency warning systems, fire fighting systems
- ▶ Controlled via Occupational License

## ▶ Before industrial activity begins

### Fitout for industrial activity

Furniture and Plant required for the industrial process needs to be installed in a way that promotes safe and healthy working conditions

- ▶ Layout planned for optimum workflow, safety, comfort
- ▶ Plant installations considering safety requirements
  - Boiler enclosures, gas cut-offs and other safety precautions
- ▶ Controlled via industrial layout, boiler safety licenses

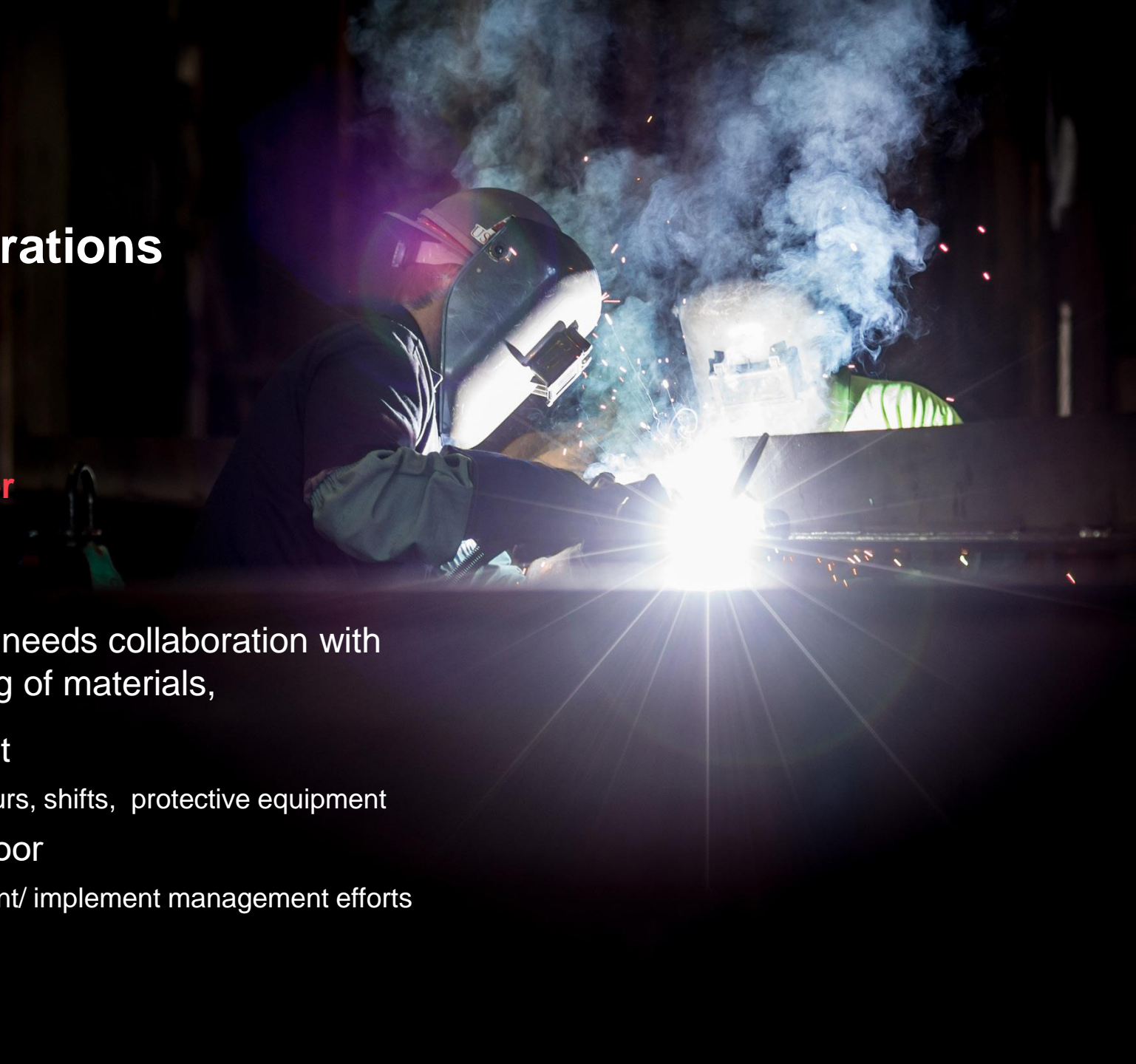


## OSH related to industrial operations

### ▶ Main responsibility shifts to the Employer

Work safety culture starts with management, needs collaboration with workers for effective implementation, handling of materials,

- ▶ Work processes, practices by management
  - Layout, ergonomics, materials handling, working hours, shifts, protective equipment
- ▶ Workers are 'eyes and ears' on the work floor
  - Collaboration, social dialogue essential to compliment/ implement management efforts
- ▶ This area subject of Technical Session 2



## ▶ OSH related to industrial operations

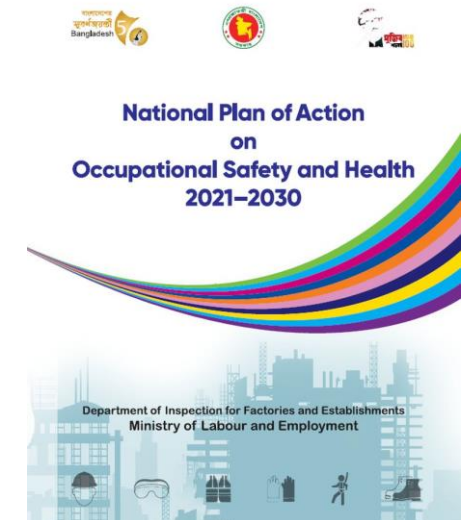
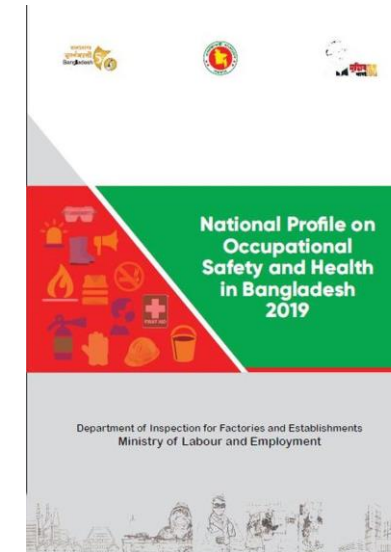
### Public institutions and the workplace

The role of government in regulating OSH in the operational workplace itself needs a multi-pronged approach. The following activities are among the most significant

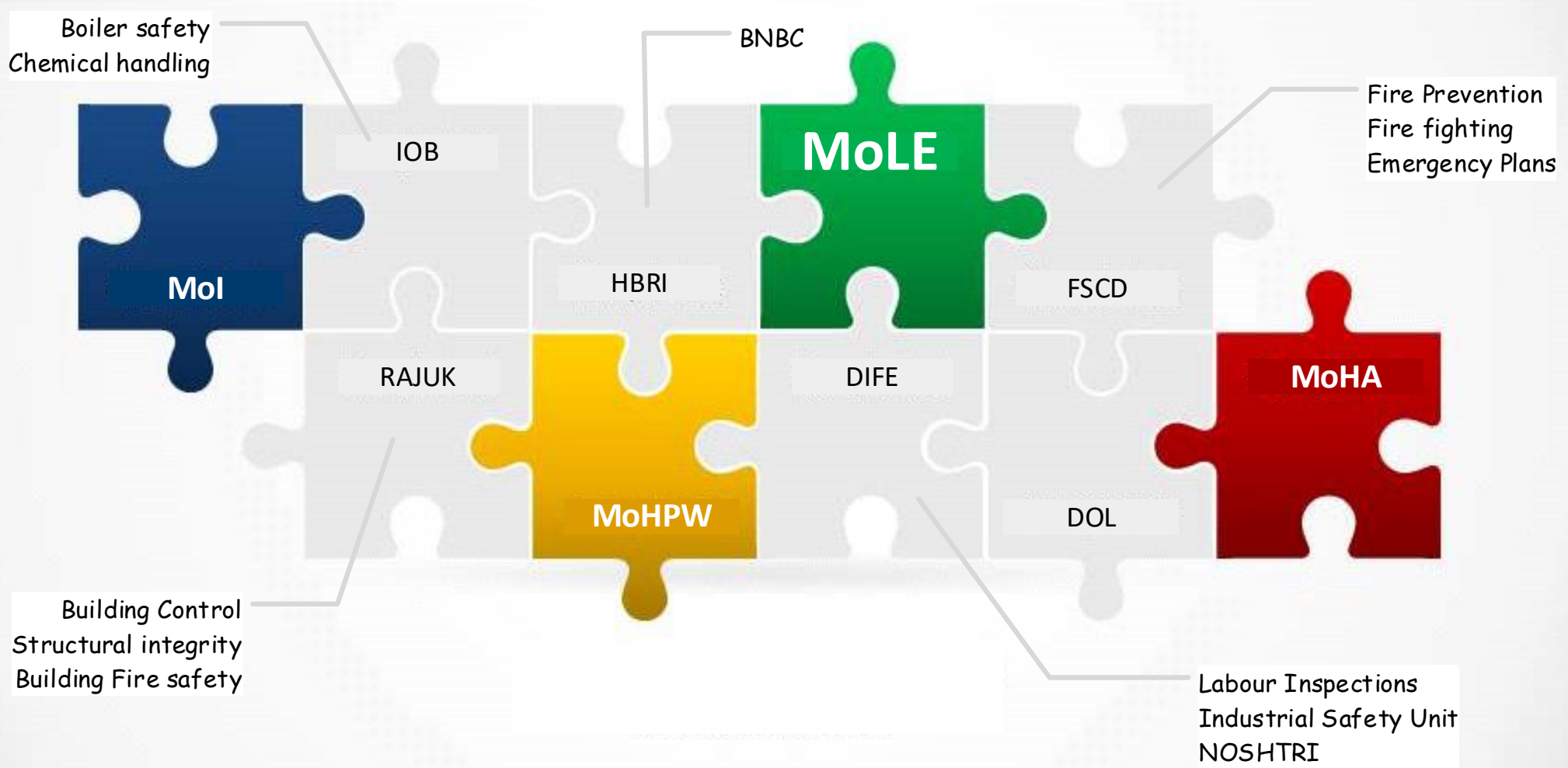
- ▶ Development of policy documents and national action plans
- ▶ Enforcement of minimum OSH standards contained in the BLA
- ▶ Monitoring the condition of workplaces via the labour inspection process

Data collection to identify common issues in a sector or across sectors

- ▶ Advice, training, research into common hazards and diseases
- ▶ Development of guidelines for sectors or industry as a whole



# Public Sector responsibilities on Occupational Safety and Health



## Governance for OSH in Bangladesh

Can government structures be trusted to deliver on safety for workers?

### Areas for discussion



- ▶ Multiple Ministries share responsibilities for OSH in industry, how much common understanding, how well are they coordinated ?



- ▶ Overlapping responsibilities, different approaches impact negatively on safety e.g. RAJUK and FSCD on application of BNBC fire safety measures



- ▶ Lack of enforcement by in one area left to other area to resolve e.g. building safety non-compliances being addressed under MoLE



- ▶ Collaboration with private sector initiatives for the regulation of OSH e.g. agreement between govt and RSC in the RMG sector for addressing building safety issues



## Governance for OSH in Bangladesh



- ▶ Employers to be made aware and held accountable for their OSH duties under BLA, how can the labour inspectorate be supported in this area?

Safety of workers at the workplace results from many interventions, both within the workplace and beyond. Industrial safety framework needed to structure multiple interventions

- ▶ Build a preventative safety culture **at workplaces**
- ▶ **Build safe workplaces** with preventative safety cultures

