

# Breathing Uneasy

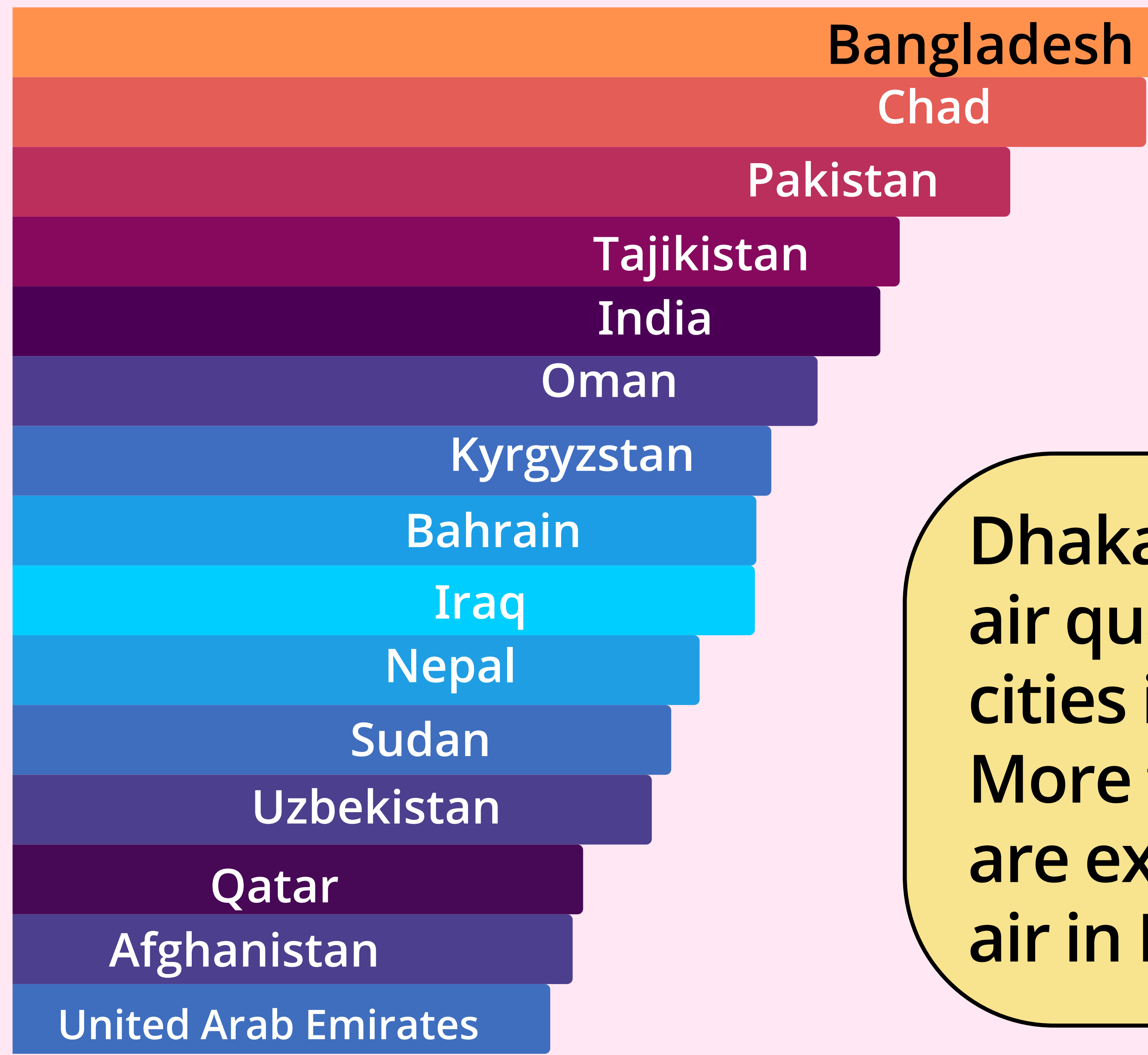
The growing problem of air pollution in Bangladesh

## World ranking of highest average PM2.5 concentration (in $\mu\text{g}/\text{m}^3$ ) in 2021

**Bangladesh was No. 1**



for having the most polluted air in the world in 2020 and 2021, according to IQAir



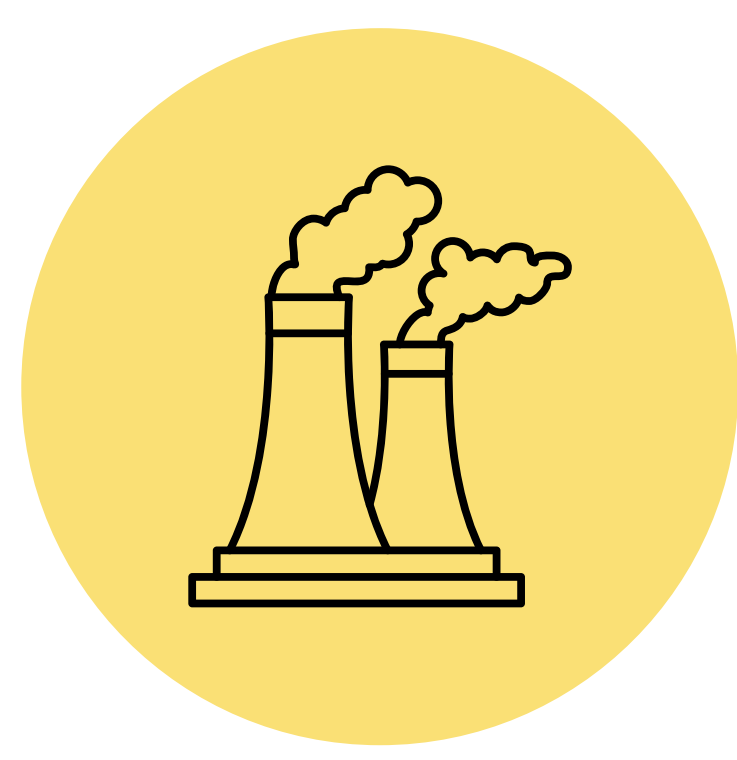
How polluted is the air in Dhaka?

Dhaka had the second worst air quality among other cities in the world in 2021. More than 10 million people are exposed to poor quality air in Dhaka.

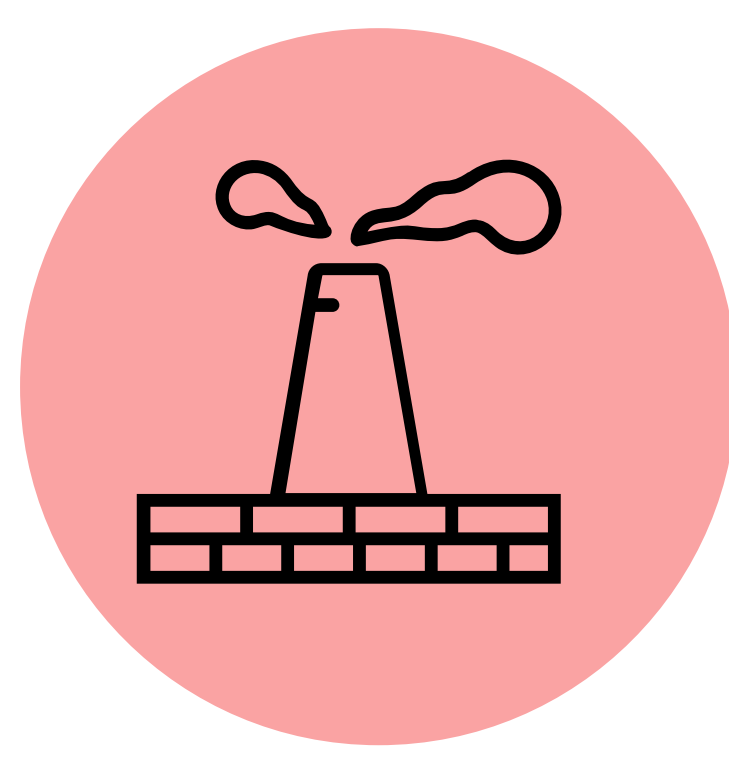
## Major Sources of Air Pollution



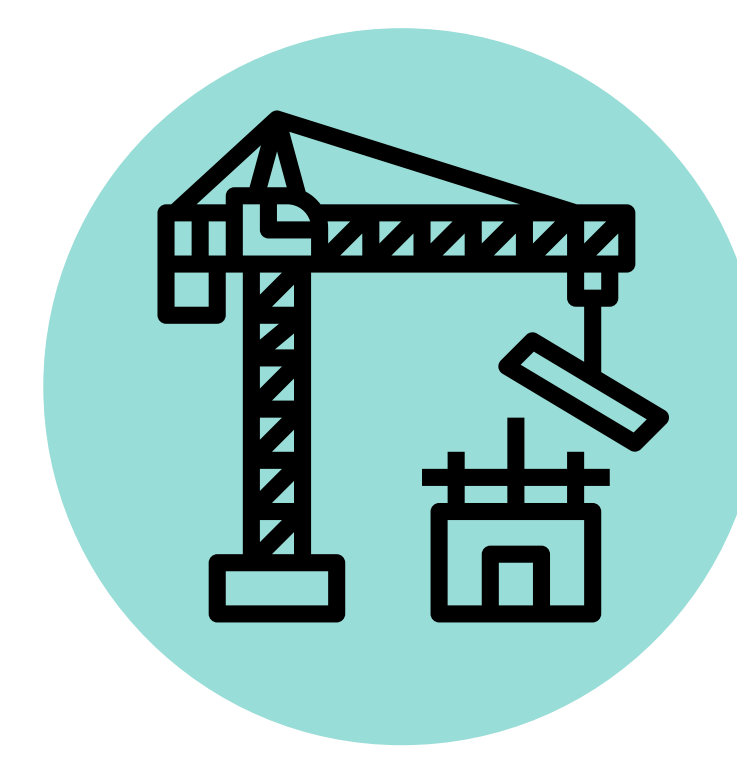
Vehicles



Coal-fired power plants



Brick kilns



Construction activities

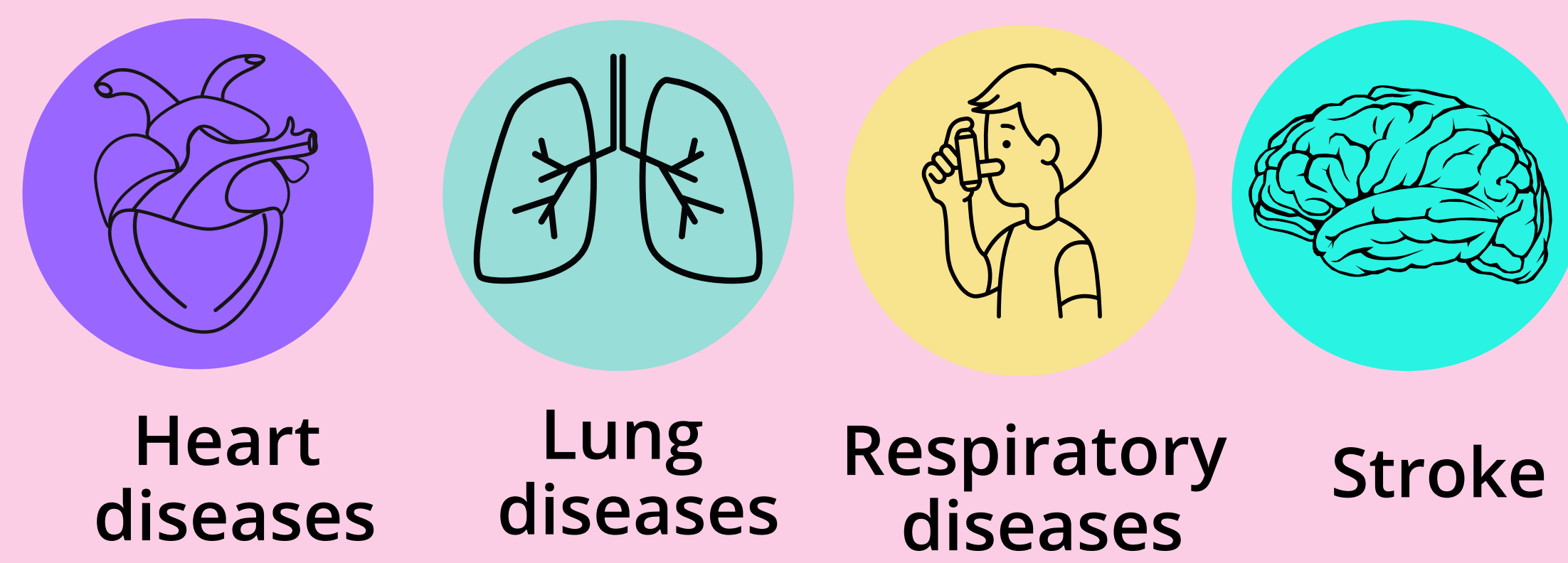


Biomass burning

Air pollution causes more than 174 deaths per 1,000 people and reduces average life expectancy by 7 years in Bangladesh



Exposure to contaminated air causes health risks and deaths from diseases such as

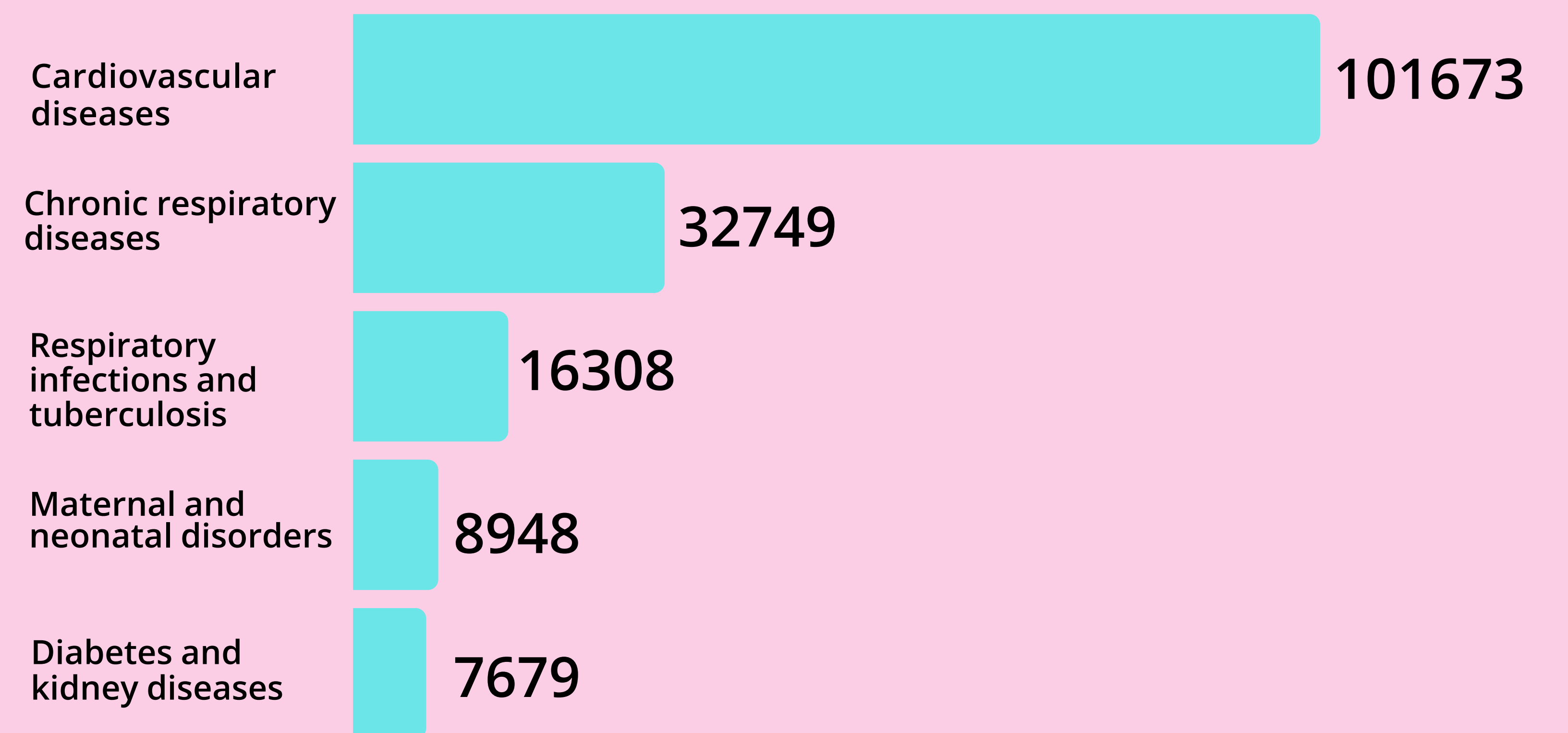


Heart diseases Lung diseases Respiratory diseases Stroke

This increases the burden of diseases, out-of-pocket expenditure on health, and reduces productivity of people who have been exposed to toxic air for a prolonged period of time

Air pollution contributes to cardiovascular diseases which caused a significant amount of deaths in 2019

Total deaths per 1,000 people in 2019 from diseases associated with air pollution



## How can we achieve cleaner air in our cities ?

- ✓ **Promote hybrid or electric cars**  
Encouraging the use of hybrid or electric cars may help reduce vehicular emissions.
- ✓ **Upgrade brick kiln technologies**  
Efficient brick production technologies which emit less pollutants should be established
- ✓ **Regulate construction sites**  
Construction sites should be regulated to ensure proper storage, coverage, and transportation of construction materials

- ✓ **Switch to green energy and technology**  
It is important to shift from coal and move towards renewable energy and increase the use of green technologies
- ✓ **Monitoring and enforcement**  
Strict monitoring and enforcement of controlling the emission level of key pollutants (eg. PM) should be maintained