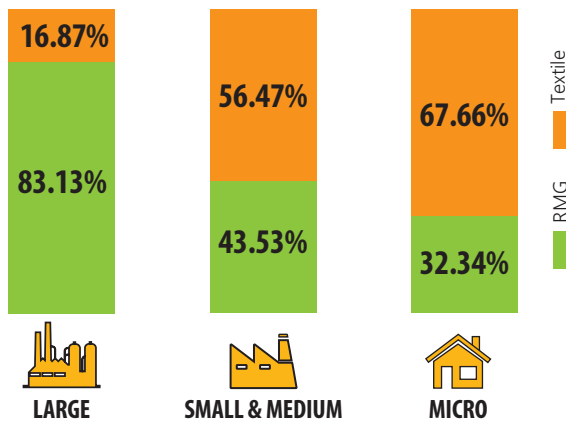


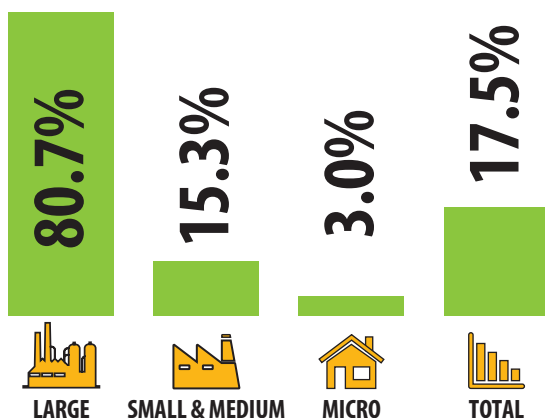
HOW FACTORIES ARE ADOPTING GREEN INITIATIVES A SNAPSHOT

CPD carried out a nationwide survey which covered owners and managers of 403 factories in Bangladesh. Of these, 182 were RMG and 221 were textile factories. Additionally, a total of 4,541 workers and supervisors were interviewed as part of this survey.

SIZE AND TYPE OF SURVEYED FACTORIES



WHETHER FACTORIES KNOW ABOUT GREEN BUILDING CERTIFICATION?



WHAT MOTIVATES FACTORIES TO ATTAIN GREEN BUILDING/PRODUCTION/PROCESS CERTIFICATION

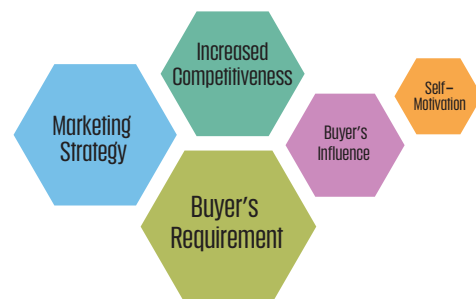
Factories with green building certificate



Factories that do not have any green building certificate but want to obtain in the future



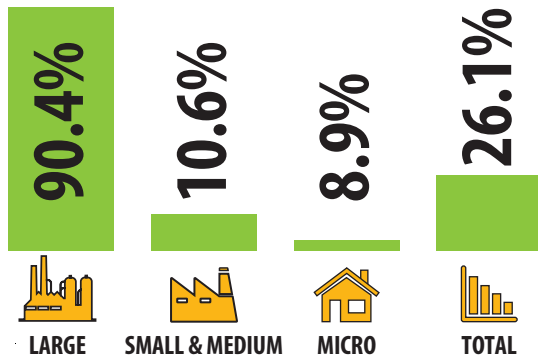
Factories with green product/ material/ resources/production process certificate



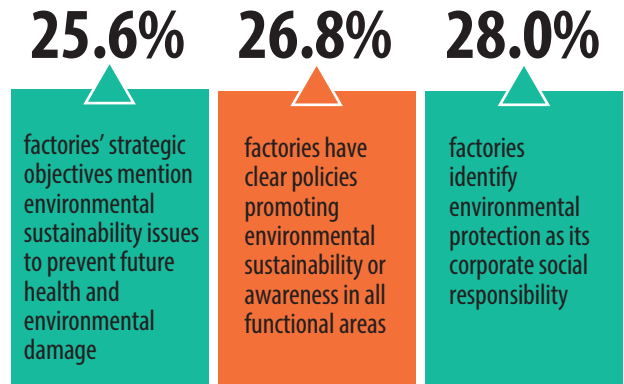
Factories that want to obtain green product/ material/ resources/production process certificate in future



DO FACTORY EMPLOYEES RECEIVE GREEN-RELATED TRAINING?



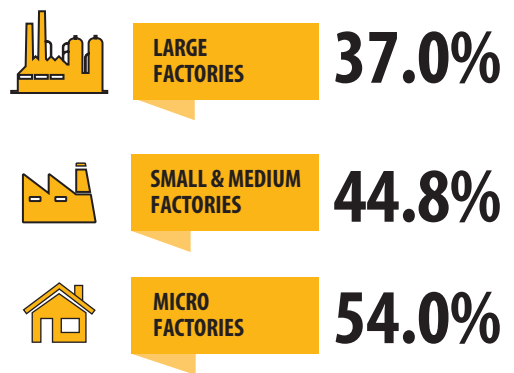
EMBEDDEDNESS OF GREEN POLICIES WITHIN FACTORIES



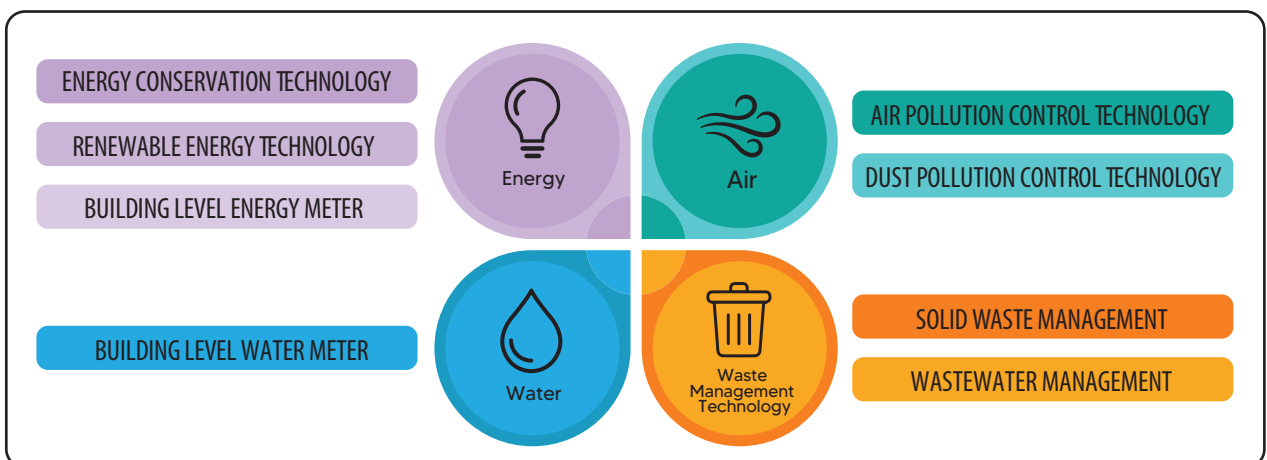
MAJOR FACTORS INFLUENCING FACTORIES' GREEN INVESTMENT DECISIONS



GREEN INVESTMENT OUT OF TOTAL INVESTMENT IN LAST FIVE YEARS



MAJOR AREAS OF GREEN INVESTMENT BY FACTORIES



FOR DETAILS



Centre for Policy Dialogue (CPD)

House 40/C, Road 11 (new)
Dhanmondi, Dhaka-1209, Bangladesh
Telephone: (+88 02) 48118090, 55001185, 58156979
E-mail: info@cpd.org.bd

